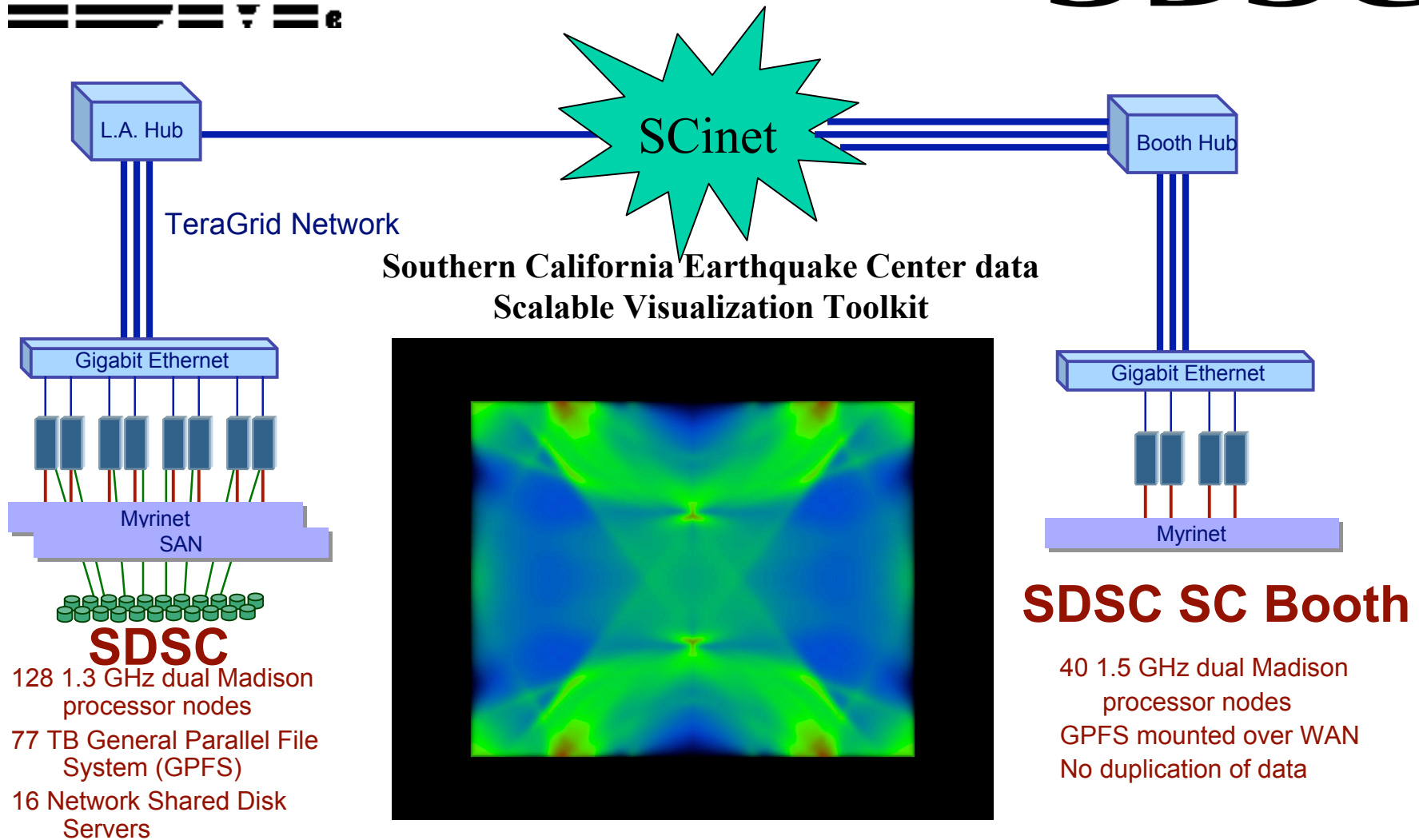


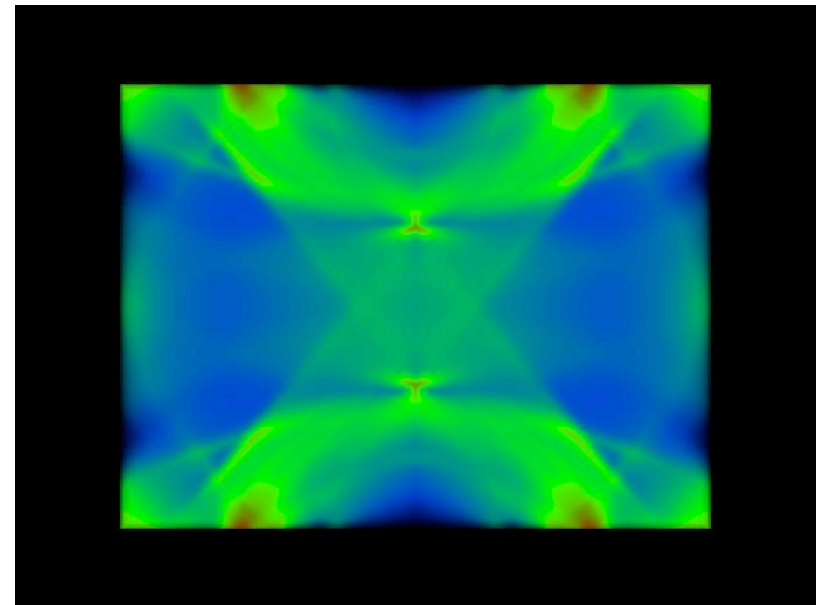
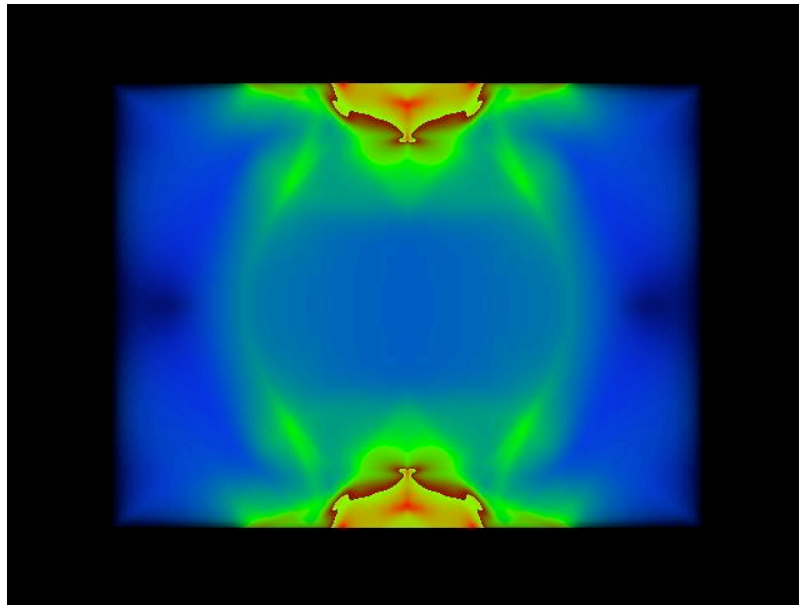
On Demand File Access over the Wide Area with GPFS Bandwidth Challenge 2003

SDSC



Southern California Earthquake Center

- Earthquake moving along a simple faultline
- Two snapshots from the simulation
 - Birds-eye view of the movement of the ground
 - Images are colored using a simple transfer function
 - Blue representing slow moving material
 - Red fast moving material
 - Green material moving at speeds in-between the two extremes
- Dataset consists of 600 1.1 GB files
- 3000 timesteps
- Data generated on TG Linux
- Recall time sequence data randomly



SCEC:

Geoff Ely

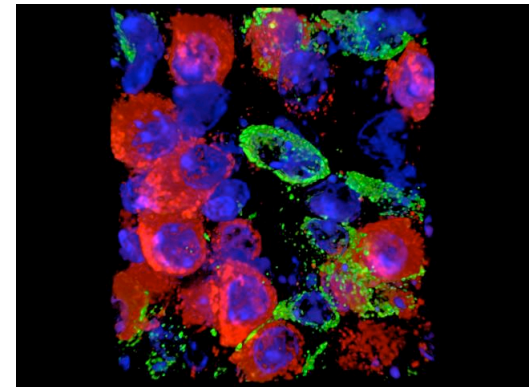
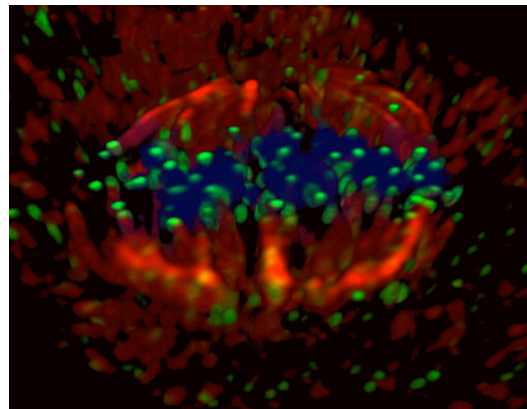
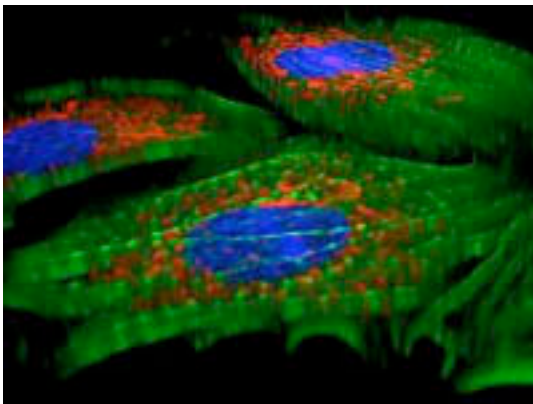
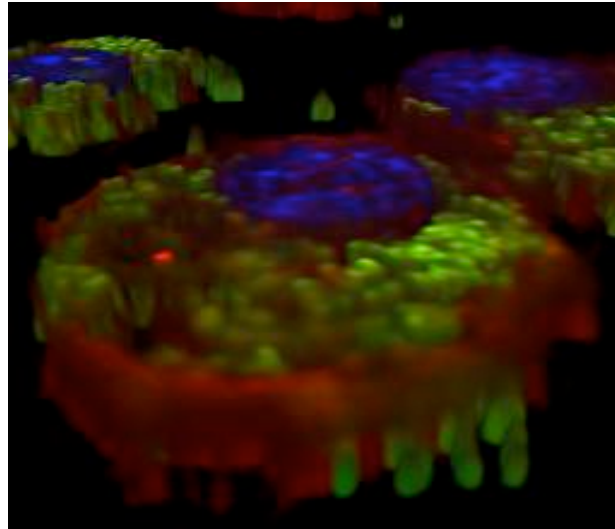
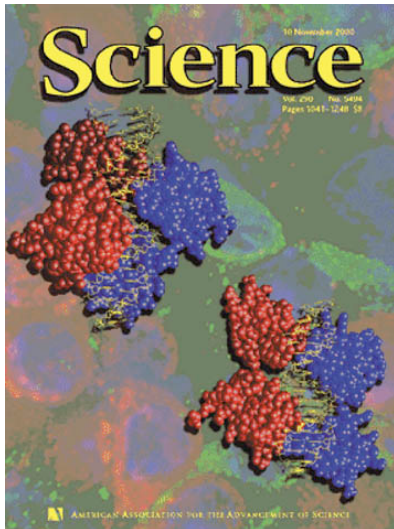
Prof Jean-Bernard Minster

SDSC

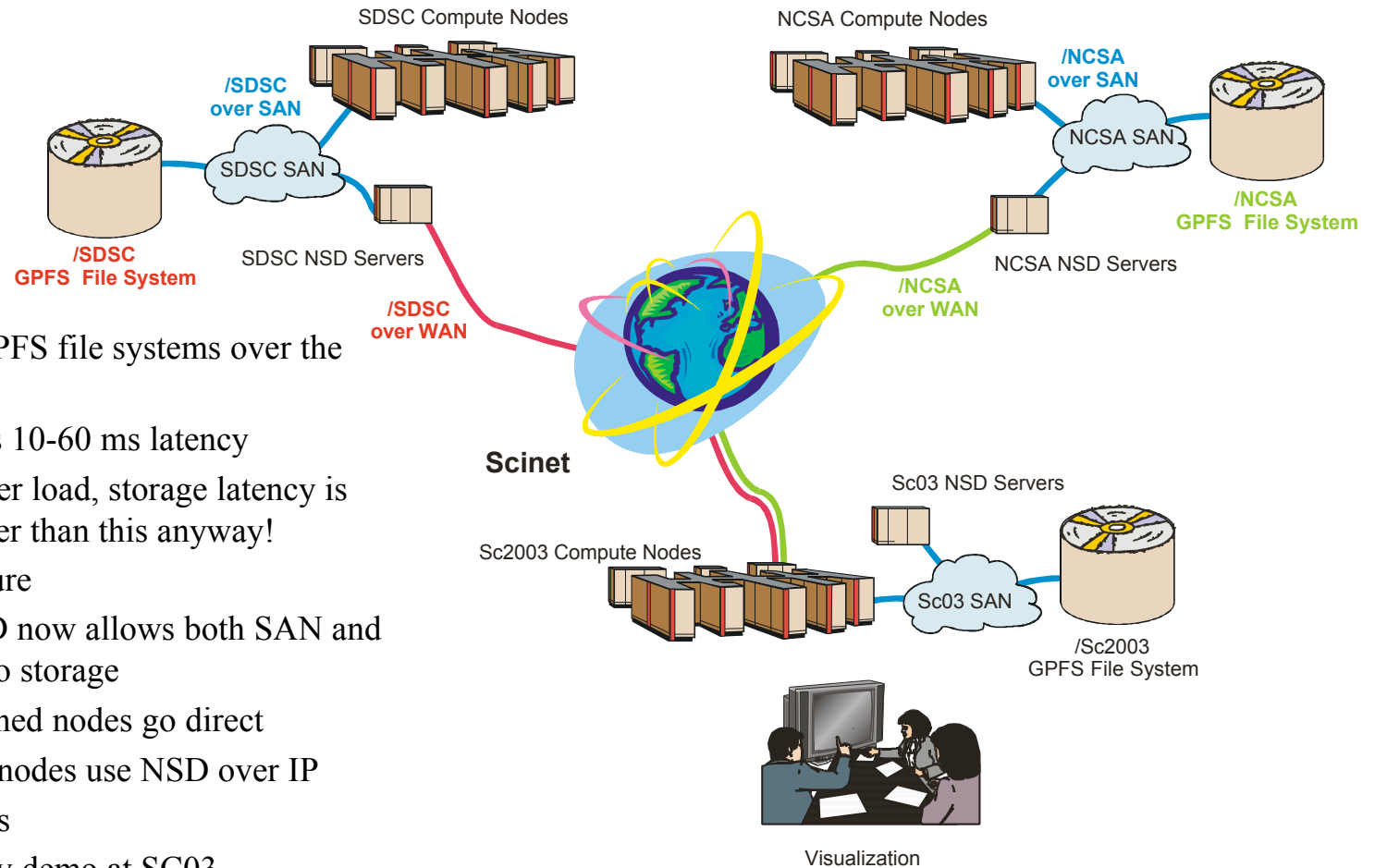
Marcio Faerman

Steve Cutchin

Other Relevant Visualizations



Access to GPFS File Systems over the WAN



- Goal: sharing GPFS file systems over the WAN
 - WAN adds 10-60 ms latency
 - ... but under load, storage latency is much higher than this anyway!
- New GPFS feature
 - GPFS NSD now allows both SAN and IP access to storage
 - SAN-attached nodes go direct
 - Non-SAN nodes use NSD over IP
- Work in progress
 - Technology demo at SC03
 - Work toward possible product release